

## How To: Connect to the wtcc Network on Windows 8

This article will assist you in connecting to the **wtcc** network. Before you're able to access the network, you must first log into **my.waketech.edu** to register. On the left-hand side, under the **Student Resources** section, click on the **Wireless Access** link. On the next page, review the guidelines, and click the **I Accept** button to register for wireless access.

**NOTE:** You will not be able to log onto the network until you've registered for wireless access. After the first time you register, you may experience a delay when first logging onto the network. If you're unable to log on, wait at least 15 minutes, and try again.

### Register for Wireless Access

1. To register for wireless access, go to **My Wake Tech (my.waketech.edu)** and log in with your Key Account User ID and password (the same User ID and password you use for your computer, WebAdvisor and Blackboard). **(Figure 1)**

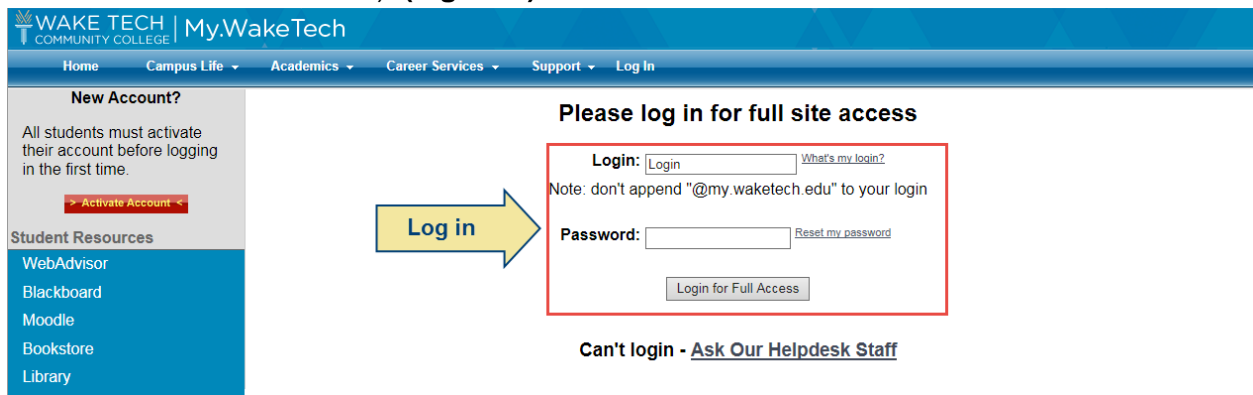


Figure 1: Log into my.waketech.edu

2. On the left-hand menu, under Student Resources, click **Wireless Access**. **(Figure 2)**

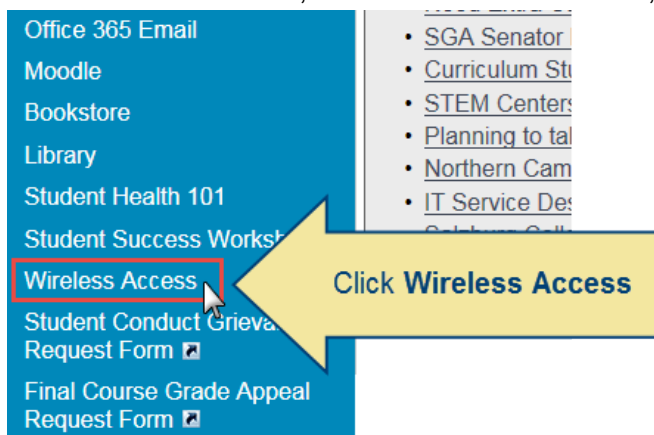


Figure 2: Click Wireless Access

- On the next page, read over the guidelines for accessing the network. Then click the **I Accept** button. (Figure 3)

## Register for Wireless Access

### Guidelines for the use of the Wake Tech Wireless Network

Wireless access to the Wake Technical Community College network is for students, employees, and designated guests of the College. Use of the *Wake Tech Wireless Network* implies that you agree to abide by the College's *Internet Use Policy* and other policies, rules, and regulations that pertain to the use of College computing equipment and network access. By using the *Wake Tech Wireless Network*, you agree to abide by the following rules:

- Interference or disruption of other authorized communications that result from the intentional or incidental misuse or misapplication of wireless network radio frequency spectrum is prohibited.
- Wireless access points must abide by all federal, state, and local laws, rules or regulations pertaining to wireless networks.
- Deployment of wireless access points by individuals or departments other than ITS is prohibited.
- Wireless access points shall require user authentication at the access point before granting access to campus or Internet services. Wireless network interfaces and end-user devices shall support authentication to access wireless networks that allow connectivity to the Campus Network Backbone.
- In the event that a wireless device interferes with other equipment, ITS shall resolve the interference as determined by use priority. The arbiter, in case of conflict, is the College's Chief Information Officer.
- ITS reserves the right to confiscate any unauthorized wireless access points.
- Any wireless network on campus, which poses a security threat, may be disconnected from the campus backbone network.
- Grievance matters will be decided by the Chief Information Officer. Appeals may be made to the President's Advisory Committee.

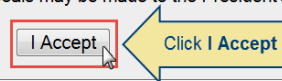


Figure 3: Click I Accept

## Getting Connected with Windows 8

- On the bottom right-hand side, next to the system clock, right-click the **Wireless** icon. Then click **Open Network and Sharing Center** (Figure 4). The Network and Sharing Center window will open.

**NOTE:** You must be on the Desktop view to be able to access the Wireless icon.

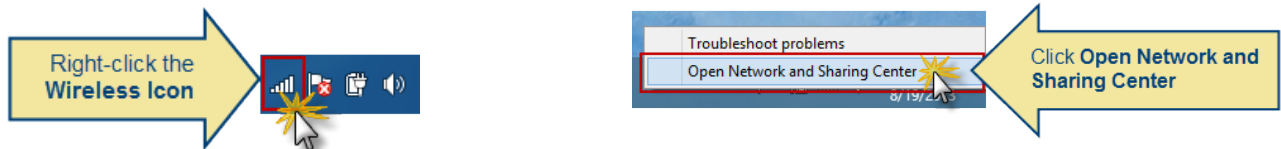


Figure 4: Right-click on the Wireless icon and click Open Network and Sharing Center

- Click the option **Set up a new connection or network**. (Figure 5)

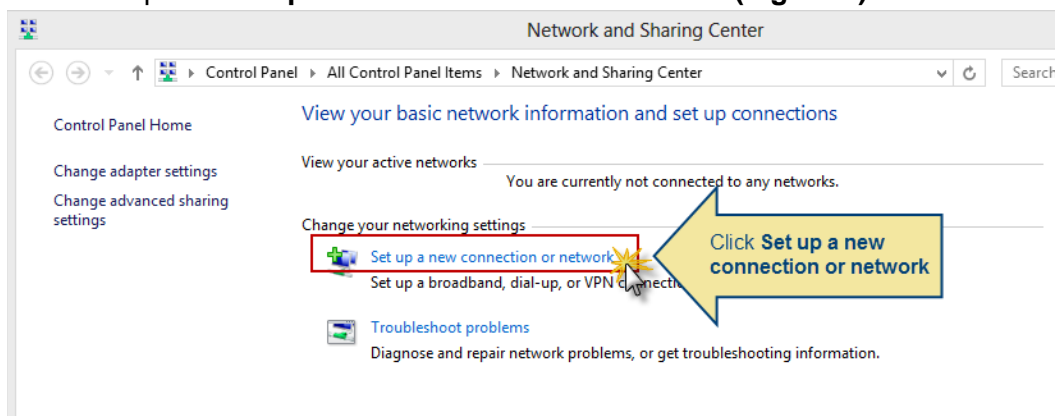
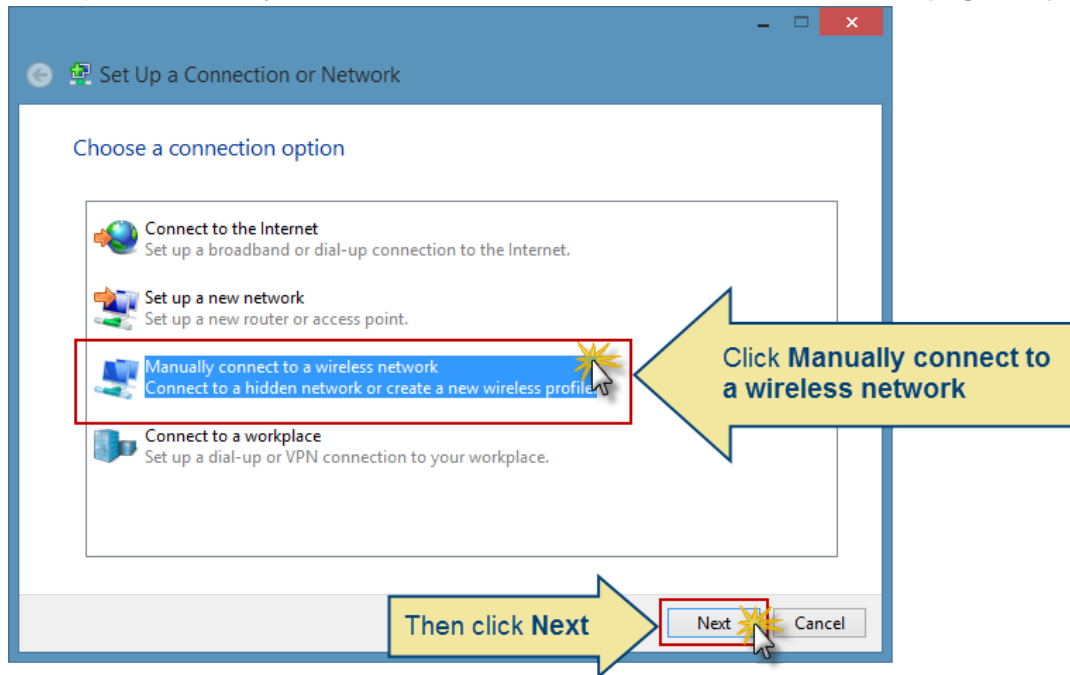


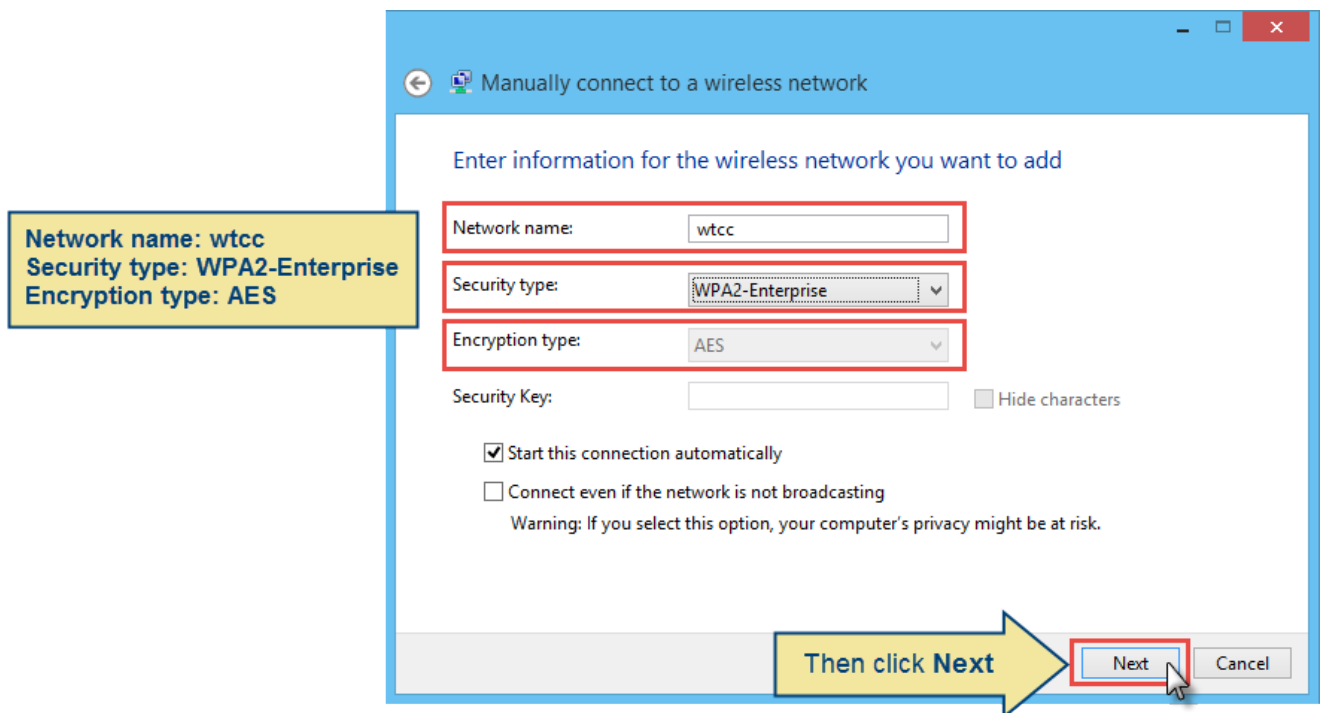
Figure 5: Click Set up a new connection or network

3. Next, click the option **Manually connect to a wireless network**, and click **Next**. (Figure 6).



**Figure 6: Click Manually connect to a wireless network, and click Next**

4. Enter the following information as shown in the picture below. Then click **Next**. (Figure 7)



**Figure 7: Enter the settings, then click Next**

5. Next, click **Change connection settings (Figure 8)**.

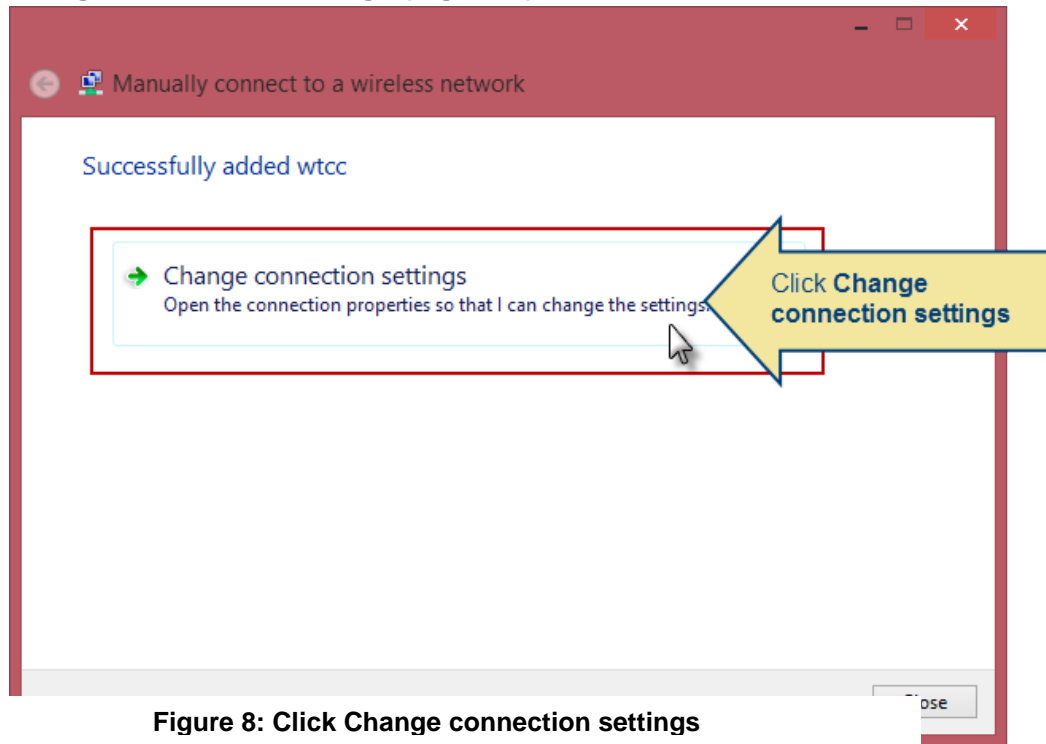


Figure 8: Click Change connection settings

6. In the Wireless Network Properties box, click the **Security** tab. Make sure the following settings are correct as shown in the picture below. When finished, click the **Advanced settings** button. (Figure 9)

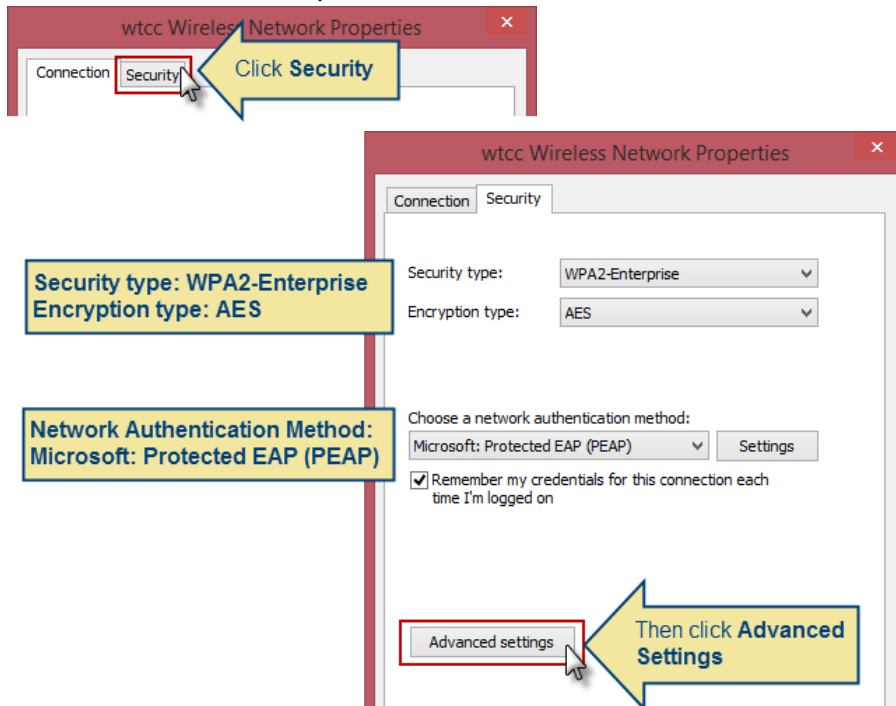
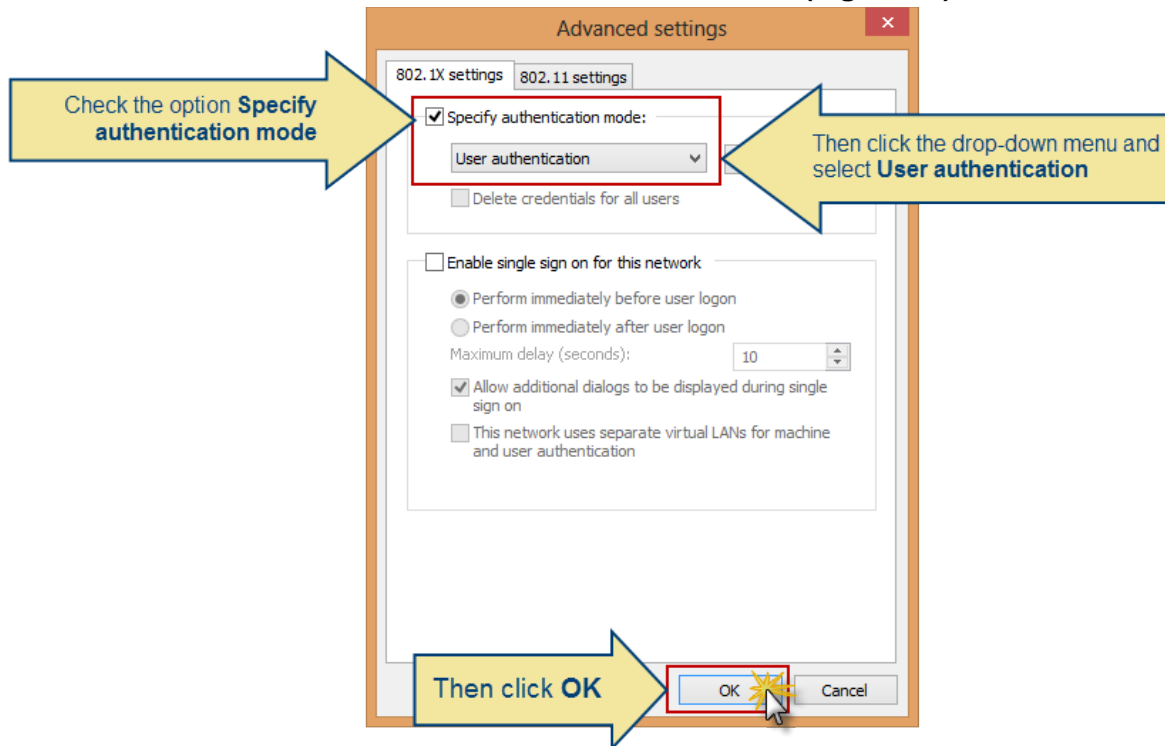


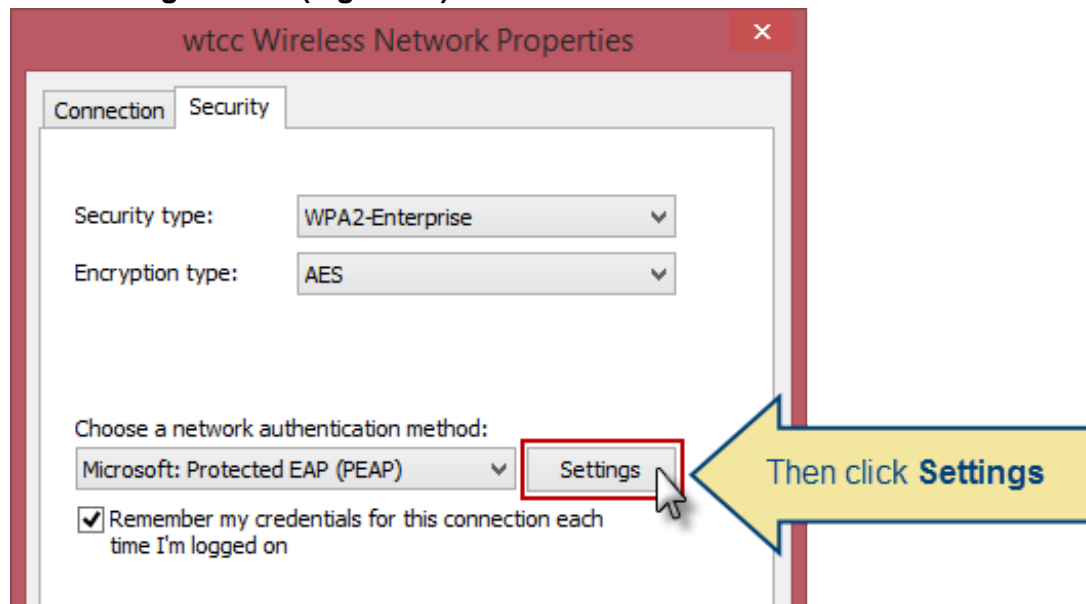
Figure 9: Enter the settings as shown in the picture above, and when finished, click the **Advanced Settings** button

7. In the Advanced Settings, check the option **Specify authentication mode**. Next, click the drop-down menu below and select **User authentication**. Then click **OK**. (Figure 10)



**Figure 10: Check the option Specify authentication mode, click the drop-down menu to select User authentication, then click OK**

8. Next, click the **Settings** button. (Figure 11)



**Figure 11: Click Settings**

9. Next, uncheck **Validate the server's identity by validating the certificate** option. Next, click the **Configure** button. (Figure 12)

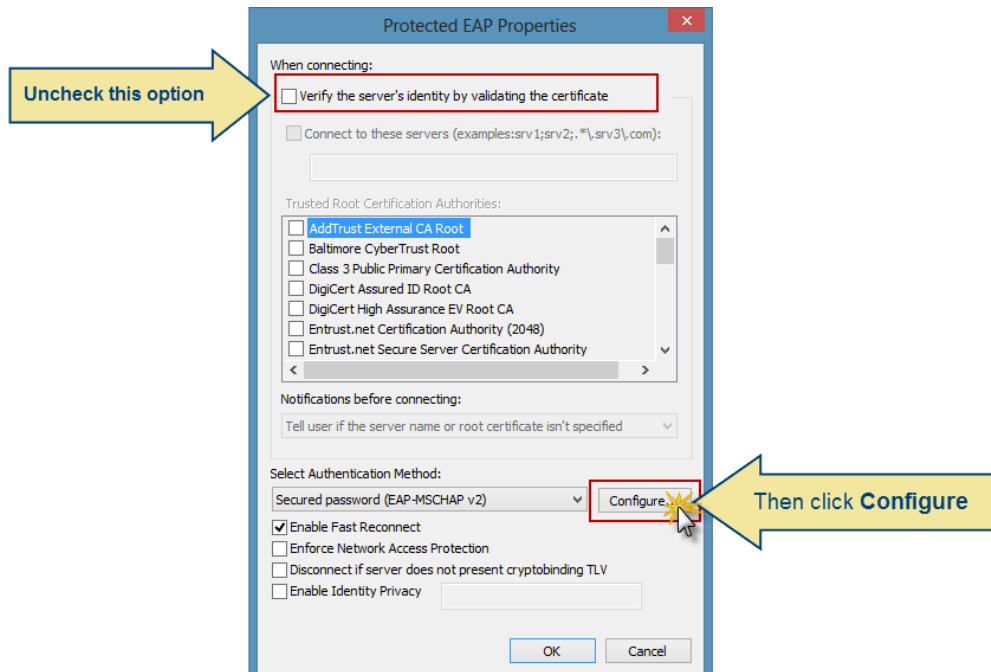


Figure 12: Enter the settings as shown in the picture above, then click the Configure button

10. Uncheck the option **Automatically use my Windows logon name and password (and domain if any)**. Then click **OK**. (Figure 13)

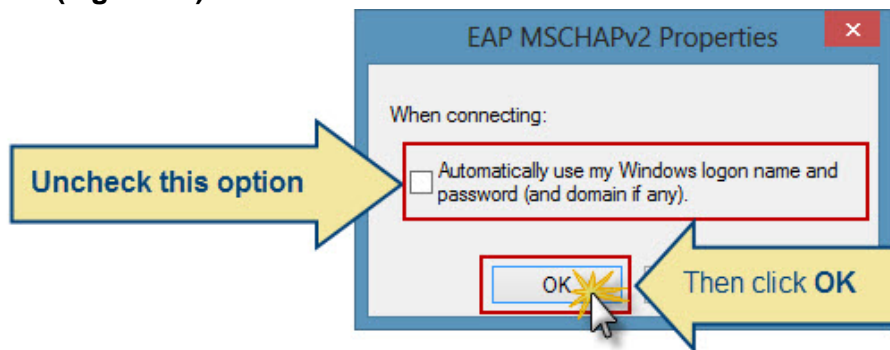


Figure 13: Uncheck the option Automatically use my Windows logon name and password

11. Click **OK**, and **OK** again to close.

12. To connect, click on the Wireless icon again to bring up the list of available networks. Click the wtcc network, then click **Connect**. (Figure 14)

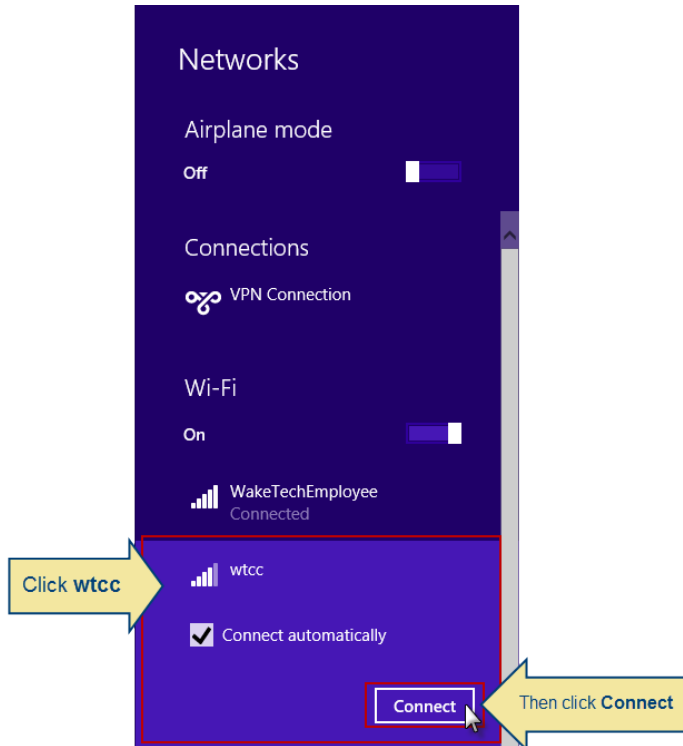


Figure 14: Click the secure wtcc, then click Connect

13. Enter your Key Account User ID and Password. Then click **OK**. After a few moments, you will be connected to the wtcc network. (Figure 15)

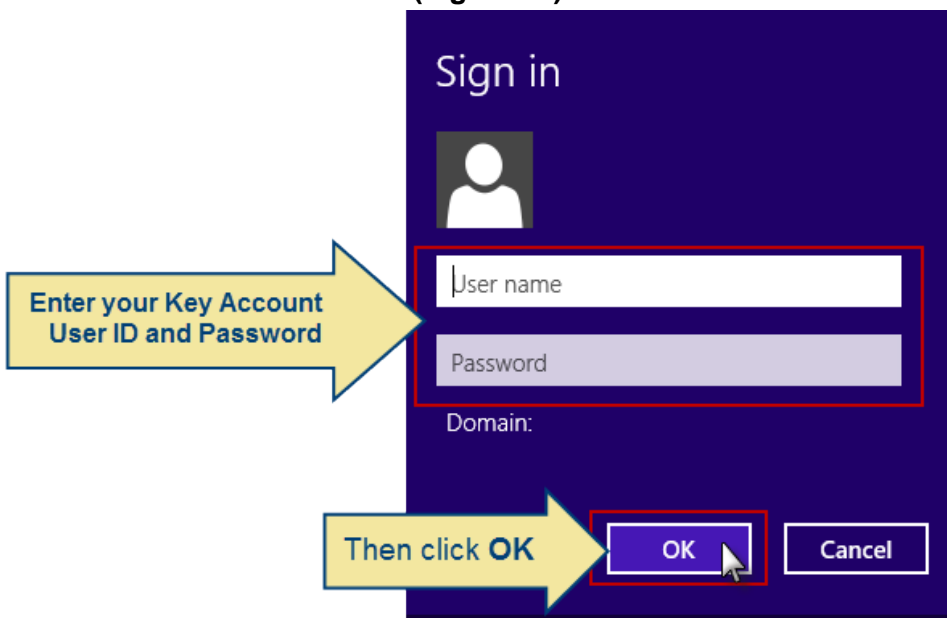


Figure 15: Enter your Key Account User ID and Password, then click OK

## Wireless Access FAQ

1. **I can't log onto the wtcc network.**

You must first register for wireless access before you can log on. To register, go to My Wake Tech and log in. On the left-hand side, under the Student Resources section, click the **Wireless Access** link. On the next page, review the guidelines, and click the **I Accept** button to register for wireless access.

2. **I registered for wireless access, but I still can't connect.**

Make sure you're connecting to the wtcc network. Some Wi-Fi utilities have a tendency to connect to other networks automatically when in range. To fix this, check your Wi-Fi utility for the option to connect to wtcc automatically. In addition, make sure your username and password is correct.

3. **I don't see any networks in my Wi-Fi utility.**

Check to see that your Wi-Fi is on. Many laptops have a physical switch that can easily be bumped into the 'off' position. Other laptops have a wireless 'hot key' on or above the keyboard that you need to press to turn on your Wi-Fi.

**For further assistance, please contact the Wake Tech IT Service Desk at 919-866-7000.**